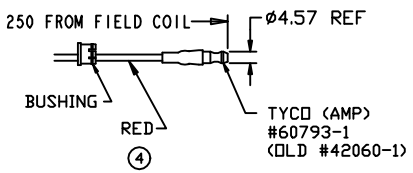
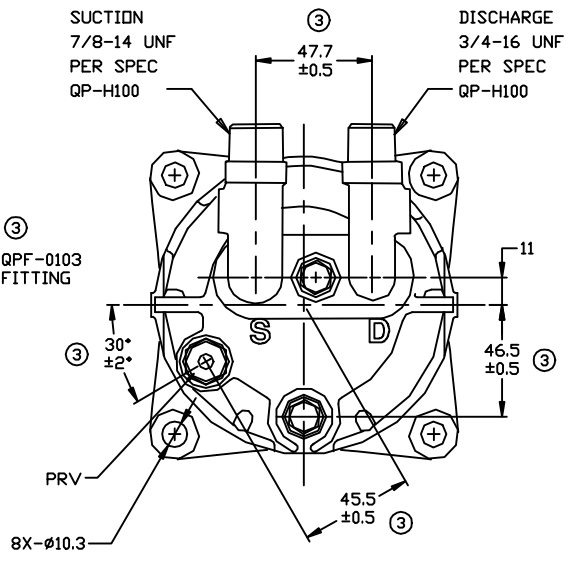
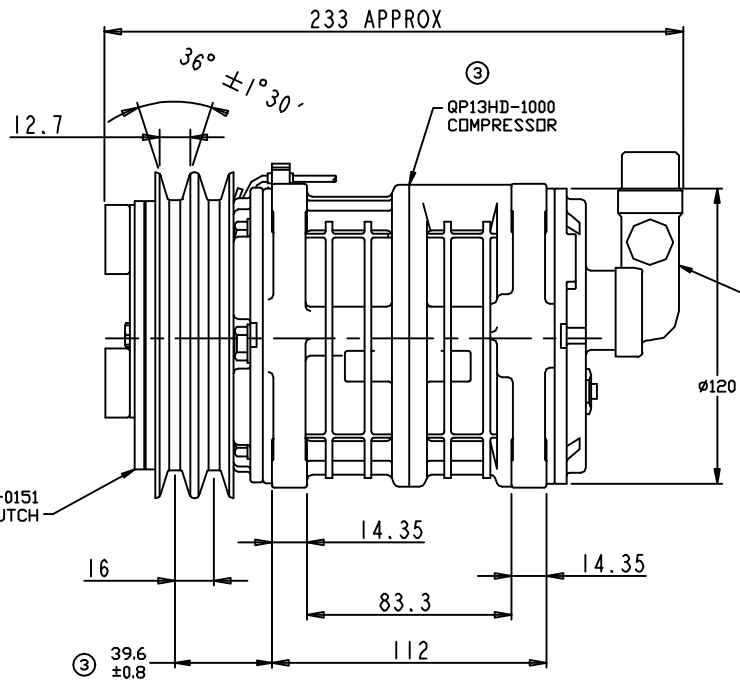
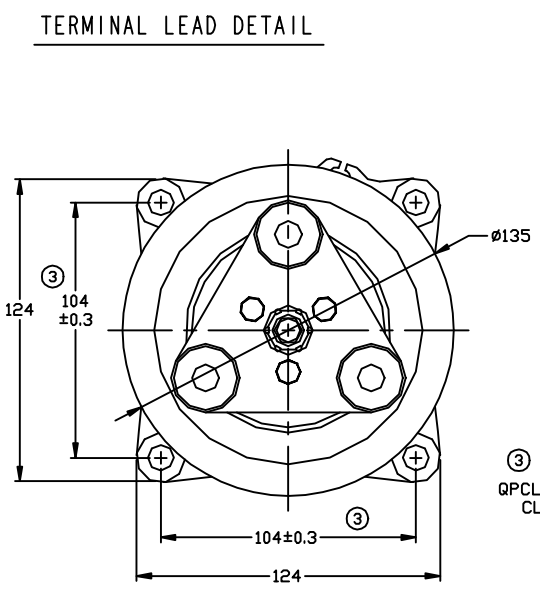


REVISIONS				
CHANGE ORDER	LTR	DESCRIPTION	DATE	APPROVED
Q08023	1	PAG 46 was PAG 100	09/30/08	
Q09025	2	ADDED 'NO DIODE' NOTE	06/11/09	
Q09035	3	ADDED TOLERANCES & PART NO'S	09/10/09	
ENG	4	ADDED WIRE COLOR: RED	12/02/10	



TERMINAL LEAD DETAIL



- CLUTCH SPECIFICATIONS:**
- VOLTAGE.....12 VDC
 - BELT.....A2
 - STATIC TORQUE
INITIAL.....35 Nm (3.5 Kgf·m)
AFTER BURNISHING.....49 Nm (5 Kgf·m)
 - MAX POWER CONSUMPTION.....45W @ 25°C
 - ROTATION DIRECTION.....CW OR CCW
 - WEIGHT.....2.25 Kg

- COMPRESSOR SPECIFICATIONS:**
- MODEL.....QP13HD
 - NUMBER OF CYLINDERS.....6
 - BORE X STROKE.....36 X 21.4 mm
 - DISPLACEMENT.....131 cm³/REV
 - SPEED RANGE.....700 - 6000 RPM
 - ROTATION DIRECTION.....CW OR CCW
 - REFRIGERANT.....R-134a
 - LUBRICANT.....PAG 46 150+20 cm³
 - WEIGHT.....4.5 Kg

② 1) NO DIODE IN CLUTCH COIL

THIRD ANGLE PROJECTION 	UNLESS OTHERWISE SPECIFIED DIMENSIONS ARE IN MM. INTERPRET DIM AND TOL PER ASME Y14.5M - 1994		CAD GENERATED DRAWING. DO NOT MANUALLY UPDATE	
	DRAWN	GLB	DATE	06/21/07
	CHECKED		APPROVED	
	FINISH		ENG APPVL	

QJUE PRODUCTS, LLC

TITLE: COMPRESSOR ASSEMBLY
QP13HD V-3/4 7/8
A2 135mm 12V 3-EYE

SIZE A	CODE IDENT NO	DWG NO	REV 4
SCALE NONE		SHEET 1 OF 1	