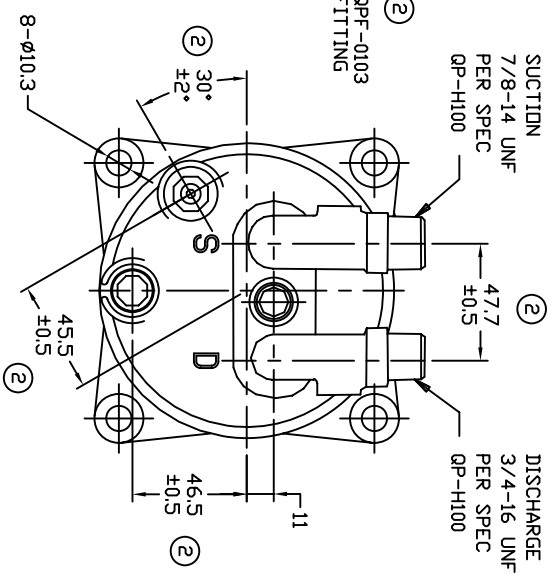
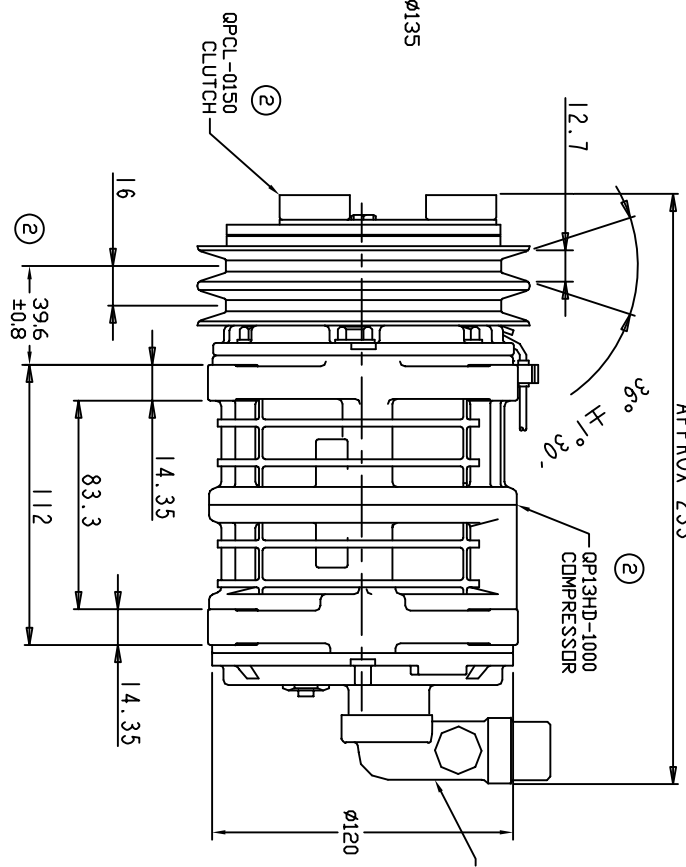
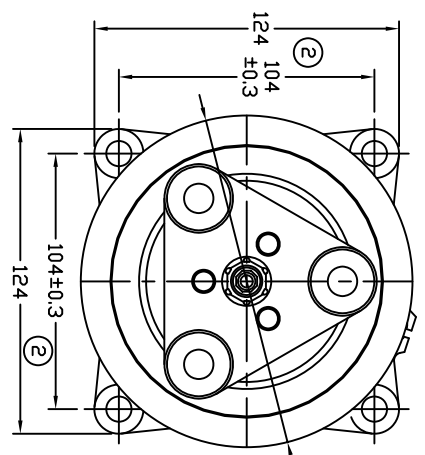


TERMINAL LEAD DETAIL

REVISIONS		DATE	APPROVED
CHANGE ORDER	LTR	DESCRIPTION	
008023	1	PAG 46 was PAG 100	09/30/08
009035	2	ADDED TOLERANCES & PART NOS	09/14/09



CLUTCH SPECIFICATIONS:

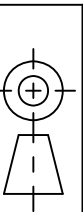
- VOLTAGE..... 24 VDC
- BELT..... A2
- STATIC TORQUE..... 35 Nm (3.5 Kgfm)
- INITIAL AFTER BURNISHING..... 49 Nm (5 Kgfm)
- MAX POWER CONSUMPTION..... 45W @ 25°C
- ROTATION DIRECTION..... CW OR CCW
- WEIGHT..... 2.25 Kg

COMPRESSOR SPECIFICATIONS:

- MODEL..... QP-13HD
- NUMBER OF CYLINDERS..... 6
- BORE X STROKE..... 36 X 21.4 mm
- DISPLACEMENT..... 131 cm³/REV
- SPEED RANGE..... 700 - 6000 RPM
- ROTATION DIRECTION..... CW OR CCW
- REFRIGERANT..... R-134a
- LUBRICANT..... PAG 46 150+20 cm3
- WEIGHT..... 4.5 Kg

UNLESS OTHERWISE SPECIFIED
 DIMENSIONS ARE IN MM. PER
 INTERPRET DIM AND TOL. PER
 ASME Y14.5M - 1994

THIRD ANGLE PROJECTION



MOORE PRODUCTS, LLC

TITLE
 COMPRESSOR ASSEMBLY
 QP-13 HD

SIZE
 A2 135MM 24V 3-EYE
 QP13-1291

SCALE: NONE
 SHEET 1 OF 1