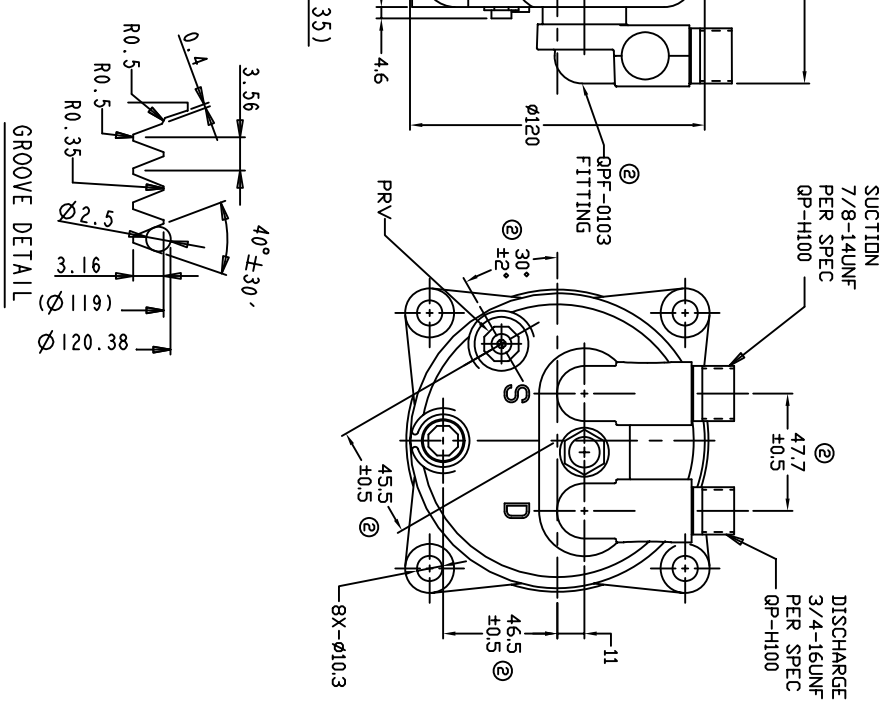
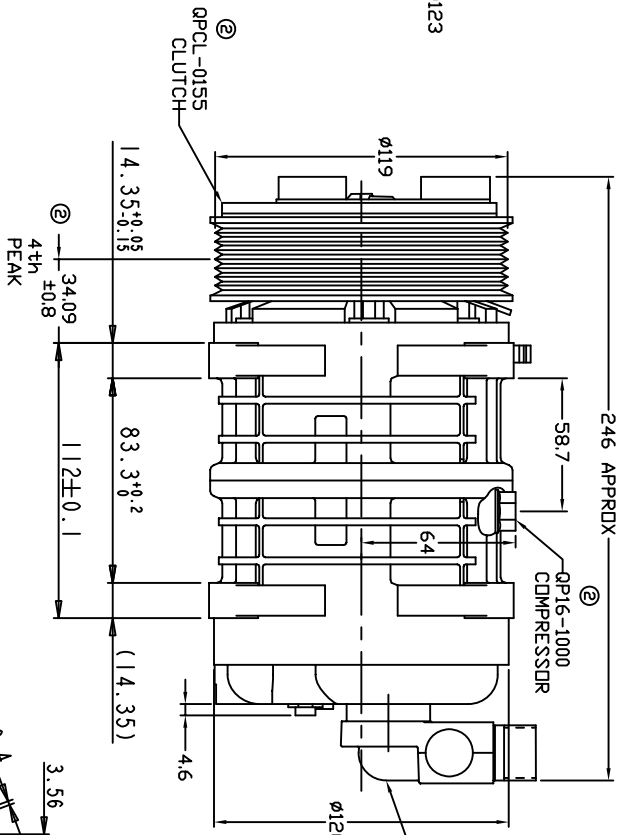
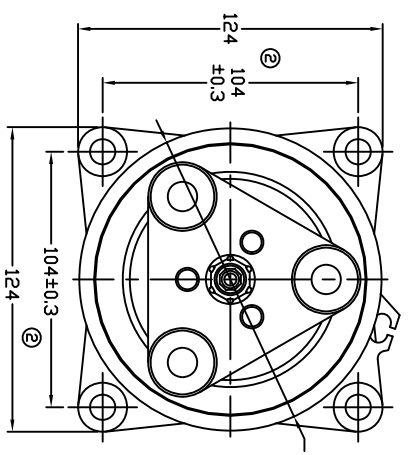


TERMINAL LEAD DETAIL

| REVISIONS | | DATE | APPROVED |
|--------------|-----|-----------------------------|----------|
| CHANGE ORDER | LTR | DESCRIPTION | |
| 008023 | 1 | PAG 46 was PAG 100 | 08/25/08 |
| 009035 | 2 | ADDED TOLERANCES & PART NOS | 11/02/09 |



CLUTCH SPECIFICATIONS:

- VOLTAGE..... 12 VDC
- BELT..... PV8
- STATIC TORQUE.....
- INITIAL AFTER BURNISHING..... 35 Nm (3.5 Kgfm)
- MAX POWER CONSUMPTION..... 49 Nm (5 Kgfm)
- ROTATION DIRECTION..... 45W Ø 25°C
- WEIGHT..... CW OR CCW
- WEIGHT..... 2.30 Kg

COMPRESSOR SPECIFICATIONS:

- MODEL..... QP16HD
- NUMBER OF CYLINDERS..... 6
- BORE X STROKE..... 36 X 26.7 mm
- DISPLACEMENT..... 162.9 cm³/REV
- SPEED RANGE..... 700 - 6000 RPM
- ROTATION DIRECTION..... CW OR CCW
- REFRIGERANT..... R-134a
- LUBRICANT..... PAG 46 180+20 cm³
- WEIGHT..... 4.7 Kg

UNLESS OTHERWISE SPECIFIED DIMENSIONS ARE IN MM. PER INTERPRET DIM AND TOL PER ASME Y14.5M - 1994

DAVE PRODUCTS, LLC

COMPRESSOR ASSEMBLY
 QP16 HD V-3/4 7/8
 PV8 119mm 12V 3 EYE

| THIRD ANGLE PROJECTION | CAD GENERATED DRAWING, DO NOT MANUALLY UPDATE | TITLE | SCALE | SHEET | OF |
|------------------------|---|------------------|----------------------------|----------|----|
| | GLB CHECKED APPROVED ENG APPVL | DATE 06/21/07 | NONE | 1 | 1 |
| FINISH | | SIZE A | CODE IDENT NO QP16-1195 | REV 2 | |