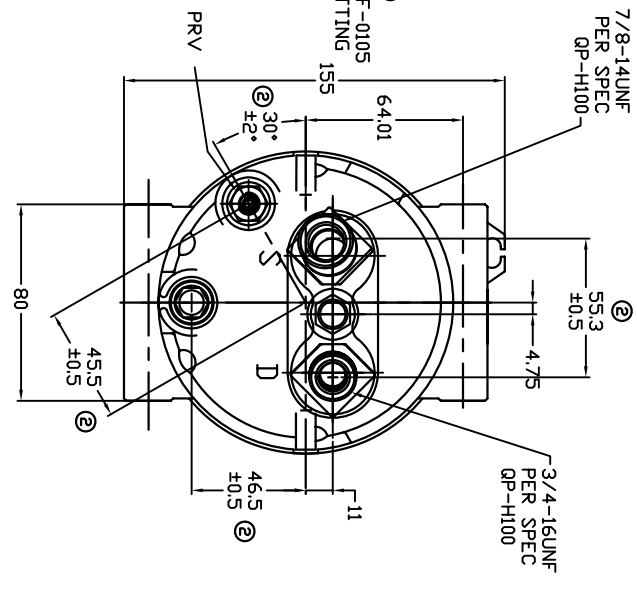
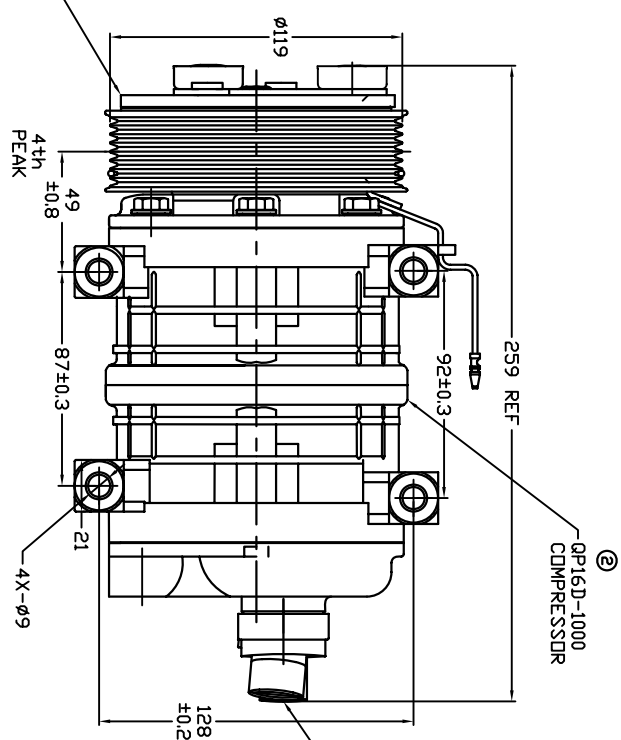
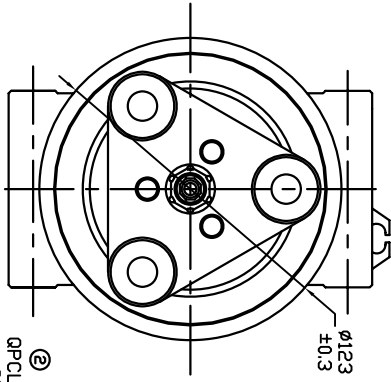


TERMINAL LEAD DETAIL

REVISIONS			DATE	APPROVED
CHANGE ORDER	LTR	DESCRIPTION		
008023	1	PAG 46 WAS PAG 100	08/26/08	
009035	2	ADDED TOLERANCES & PART NDS	11/05/09	



CLUTCH SPECIFICATIONS:

- VOLTAGE..... 12 VDC
- BELT..... PV8
- STATIC TORQUE..... 35 Nm (3.5 kgfm)
- INITIAL AFTER BURNISHING..... 49 Nm (5 kgfm)
- MAX POWER CONSUMPTION..... 45W @ 25°C
- ROTATION DIRECTION..... CW OR CCW
- WEIGHT..... 2.25 Kg

COMPRESSOR SPECIFICATIONS:

- MODEL..... QP16HD
- NUMBER OF CYLINDERS..... 6
- BORE X STROKE..... 36 X 26.7 mm
- DISPLACEMENT..... 162.9 cm³/REV
- SPEED RANGE..... 700 - 6000 RPM
- ROTATION DIRECTION..... CW
- REFRIGERANT..... R-134g
- LUBRICANT..... PAG 46 180+20cm³
- WEIGHT..... 4.7 Kg

UNLESS OTHERWISE SPECIFIED DIMENSIONS ARE IN MM PER INTERPRET DIM AND TOL PER ASME Y14.5M - 1994

DOLE PRODUCTS, LLC

COMPRESSOR ASSEMBLY
QP16HD H-3/4 7/8
PV8 119mm 12V 3-EYE

THIRD ANGLE PROJECTION	CAD GENERATED DRAWING; DO NOT MANUALLY UPDATE	DATE	TITLE
CHECKED	GLB	03/05/08	COMPRESSOR ASSEMBLY
APPROVED	ENG APPVL		QP16HD H-3/4 7/8
FINISH			PV8 119mm 12V 3-EYE
			SCALE NONE
			SHEET 1 OF 1