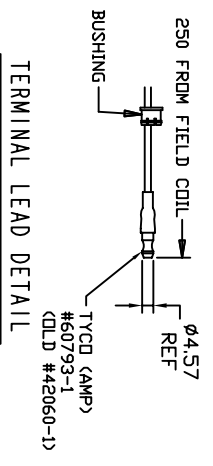
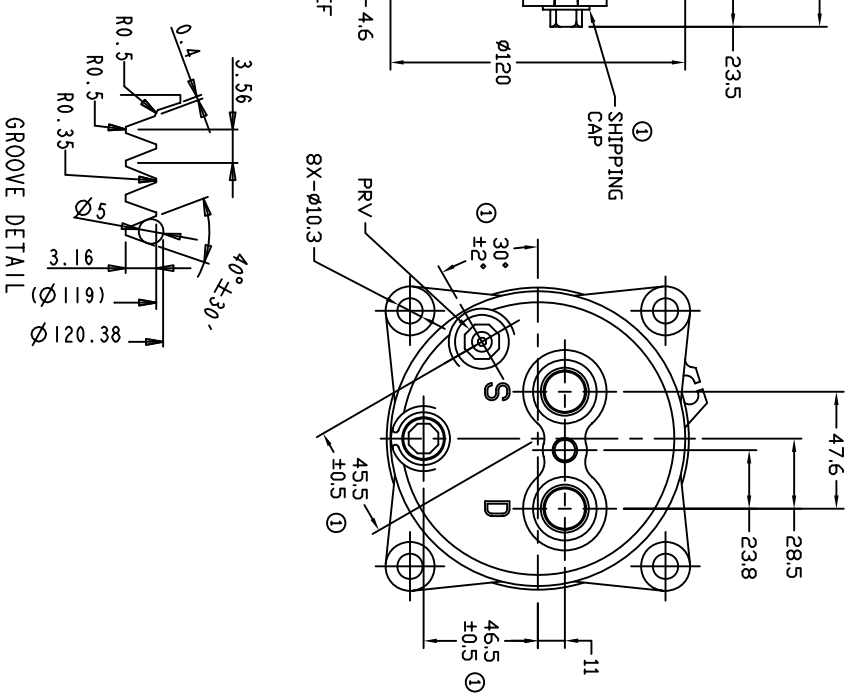
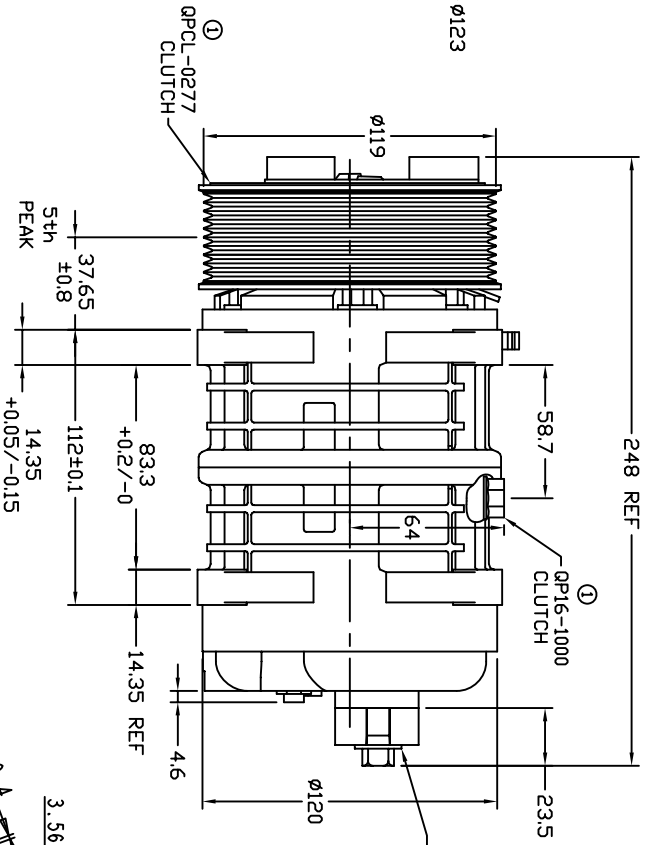
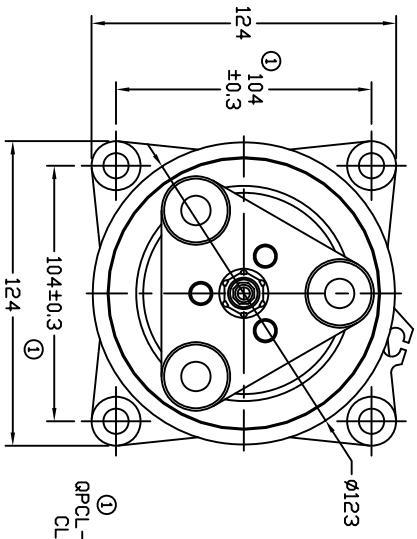


REVISIONS		DATE	APPROVED
CHANGE ORDER	LTR	DESCRIPTION	
009035	1	ADDED TOLERANCES & PART NOS	
		10/22/09	



TERMINAL LEAD DETAIL



CLUTCH SPECIFICATIONS:

- VOLTAGE..... 12VDC
- BELT..... PV10
- STATIC TORQUE.....
- INITIAL AFTER BURNISHING..... 35 Nm (3.5 Kgfm)
- MAX POWER CONSUMPTION..... 49 Nm (5 Kgfm) 45W @ 25°C
- ROTATION DIRECTION..... CW OR CCW
- WEIGHT..... 2.28 Kg

COMPRESSOR SPECIFICATIONS:

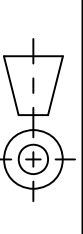
- MODEL..... QP16HD
- NUMBER OF CYLINDERS..... 6
- BORE X STROKE..... 36 X 26.7 mm
- DISPLACEMENT..... 162.9 cm³/REV
- SPEED RANGE..... 700 - 6000 RPM
- ROTATION DIRECTION..... CW OR CCW
- REFRIGERANT..... R-134a
- LUBRICANT..... PAG 46 180+20cm³
- WEIGHT..... 4.7 Kg

UNLESS OTHERWISE SPECIFIED DIMENSIONS ARE IN MM. PER INTERPRET DIM AND TOL. PER ASME Y14.5M - 1994



CAD GENERATED DRAWING. DO NOT MANUALLY UPDATE.

TITLE
COMPRESSOR ASSEMBLY
QP16HD, H-PAD
PV10 119mm 12V 3-EYE



DRAWN: GLB
CHECKED:
APPROVED:
DATE: 06/23/09

SCALE: NONE
SHEET 1 OF 1



ENG APPVL

SIZE: A
CODE IDENT NO: QP16-1705
REV: 1

A

6

5

4

3

2

1