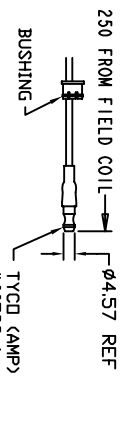
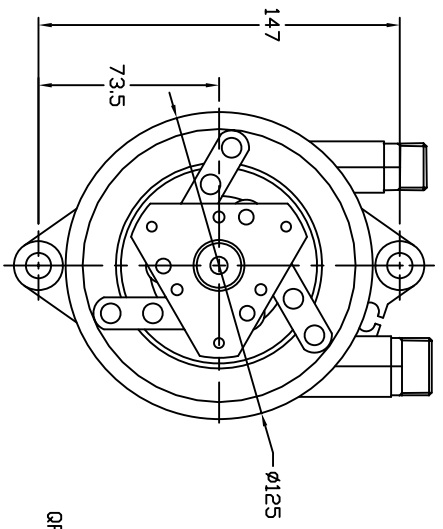


REVISIONS				
CHANGE ORDER	LTR	DESCRIPTION	DATE	APPROVED



TERMINAL LEAD DETAIL

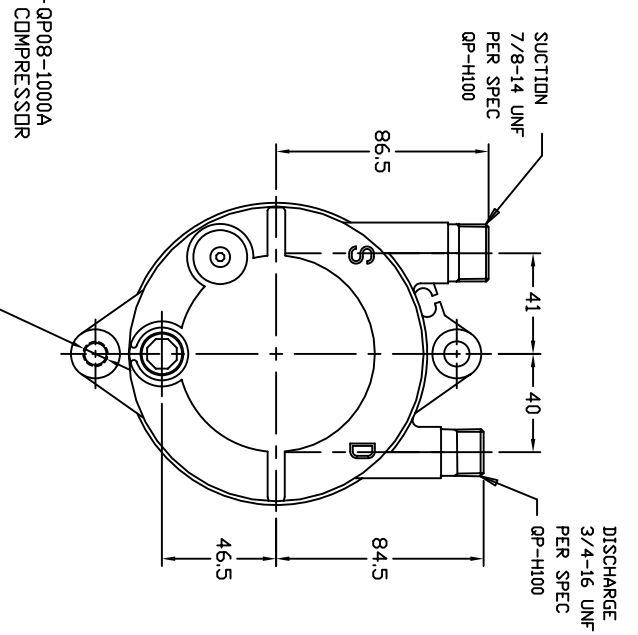
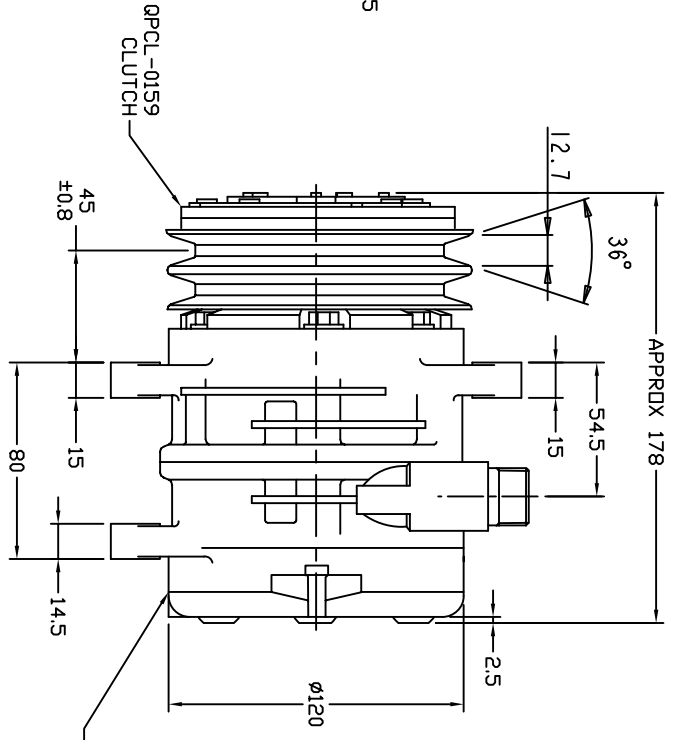


CLUTCH SPECIFICATIONS:

- VOLTAGE..... 12 VDC
- BELT..... A2
- STATIC TORQUE..... 35 Nm (3.5 kgfm)
- INITIAL AFTER BURNISHING..... 49 Nm (5 kgfm)
- MAX POWER CONSUMPTION..... 45W @ 25°C
- ROTATION DIRECTION..... CW OR CCW
- WEIGHT..... 2.25 Kg

COMPRESSOR SPECIFICATIONS:

- MODEL..... QP08HD
- NUMBER OF CYLINDERS..... 6
- BORE X STROKE..... 36 X 13.4 mm
- DISPLACEMENT..... 82.0 cm³/REV
- SPEED RANGE..... 700 - 6000 RPM
- ROTATION DIRECTION..... CW OR CCW
- REFRIGERANT..... R-134a
- LUBRICANT..... PAG 46 150+20 cm³
- WEIGHT..... 4.1 Kg



SUCTION
 7/8-14 UNF
 PER SPEC
 QP-H100

DISCHARGE
 3/4-16 UNF
 PER SPEC
 QP-H100

QP08-1000A
 COMPRESSOR

UNLESS OTHERWISE SPECIFIED
 DIMENSIONS ARE IN MM PER
 INTERPRET DIM AND TOL PER
 ASME Y14.5M - 1994

QUE PRODUCTS, LLC

THIRD ANGLE PROJECTION	CAD GENERATED DRAWING; DO NOT MANUALLY UPDATE	DATE
	GLB	11/20/09
FINISH	ENG APPVL	

TITLE	SCALE	SHEET	OF
COMPRESSOR ASSEMBLY QP08HD V-3/4 7/8 A2 125mm 12V LEAF SPRING	NONE	1	1
SIZE	CODE	IDENT NO	DWG NO
A			QP08-1138
REV			