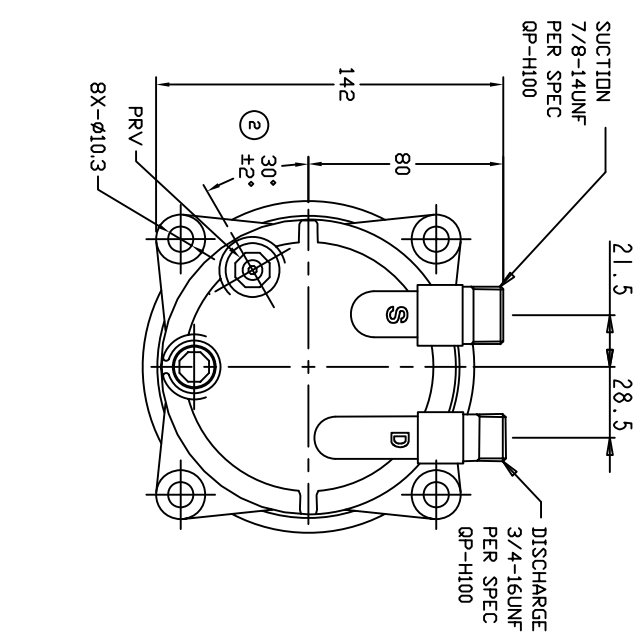
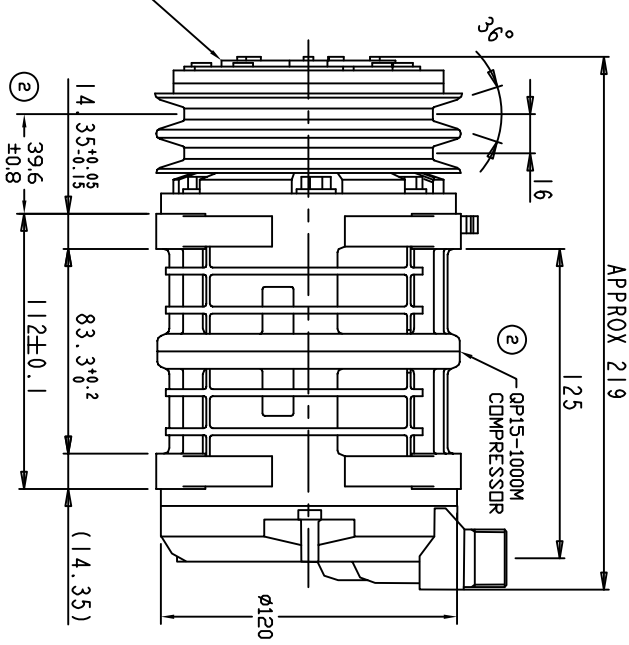
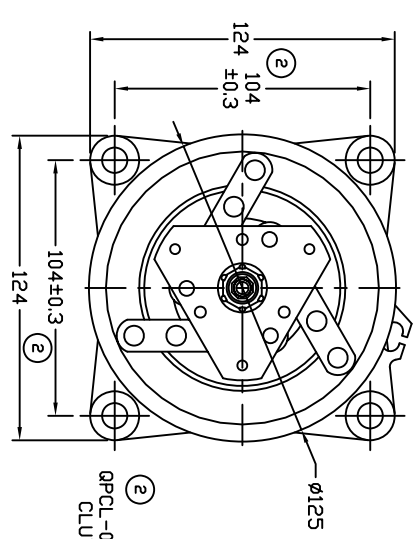


TERMINAL LEAD DETAIL

| REVISIONS | | | DATE | APPROVED |
|--------------|-----|-----------------------------|----------|----------|
| CHANGE ORDER | LTR | DESCRIPTION | | |
| 008023 | 1 | PAG 46 WAS PAG 100 | 10/01/08 | |
| 009035 | 2 | ADDED TOLERANCES & PART NDS | 09/22/09 | |



CLUTCH SPECIFICATIONS:

- VOLTAGE..... 12 VDC
- BELT..... A2
- STATIC TORQUE..... 35 Nm (3.5 kgfm)
- INITIAL AFTER BURNISHING..... 49 Nm (5 kgfm)
- MAX POWER CONSUMPTION..... 45W @ 25°C
- ROTATION DIRECTION..... CW OR CCW
- WEIGHT..... 2.30 Kg

COMPRESSOR SPECIFICATIONS:

- MODEL..... QP15HD
- NUMBER OF CYLINDERS..... 6
- BORE X STROKE..... 36 X 24.0 mm
- DISPLACEMENT..... 146.7 cm³/REV
- SPEED RANGE..... 700 - 6000 RPM
- ROTATION DIRECTION..... CW OR CCW
- REFRIGERANT..... R-134a
- LUBRICANT..... PAG 46 150+20cmm3
- WEIGHT..... 4.6 Kg

UNLESS OTHERWISE SPECIFIED DIMENSIONS ARE IN MM PER ASME Y14.5M - 1994

DOE PRODUCTS, LLC
COMPRESSION ASSEMBLY
QP15HD V-3/4 7/8 MOND HEAD
A2 125mm 12V LEAF SPRING

| THIRD ANGLE PROJECTION | CAD GENERATED DRAWING, DO NOT MANUALLY UPDATE | TITLE | SCALE | SHEET | OF |
|------------------------|---|------------------|----------------------------|--------|----------|
| | GLB CHECKED APPROVED ENG APPVL | DATE 11/08/07 | A | 1 | 1 |
| FINISH | | SIZE A | CODE IDENT NO QP15-1161 | DWG NO | REV 2 |