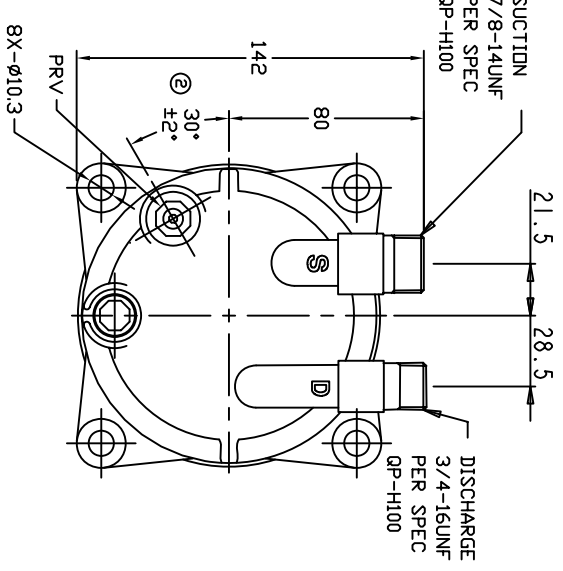
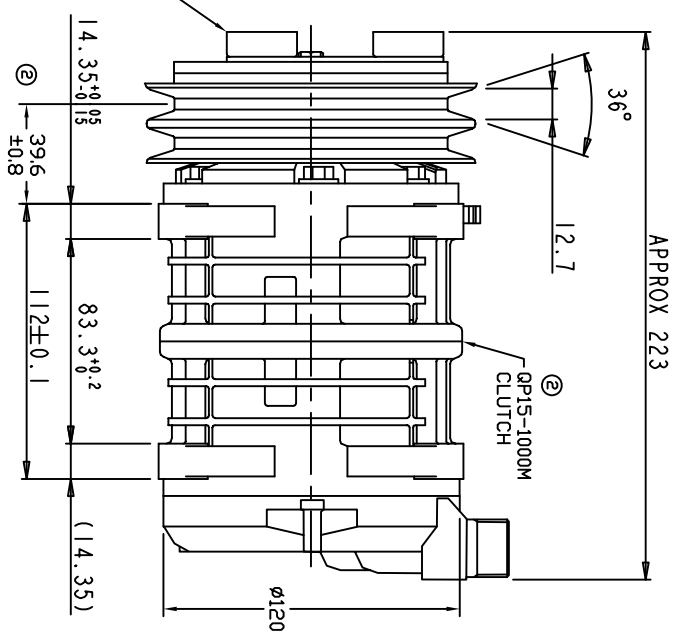
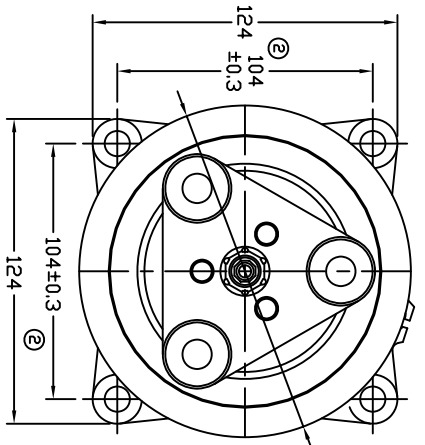


TERMINAL LEAD DETAIL

REVISIONS		DATE	APPROVED
CHANGE ORDER	LTR	DESCRIPTION	
008023	1	PAG 46 was PAG 100	10/01/08
009035	2	ADDED TOLERANCES & PART NOS	09/23/09



CLUTCH SPECIFICATIONS:

- VOLTAGE.....24 VDC
- BELT.....A2
- STATIC TORQUE.....35 Nm (3.5 Kgfm)
- AFTER BURNISHING.....49 Nm (5 Kgfm)
- MAX POWER CONSUMPTION.....45W @ 25°C
- ROTATION DIRECTION.....CW OR CCW
- WEIGHT.....2.25 Kg

COMPRESSOR SPECIFICATIONS:

- MODEL.....QP15HD
- NUMBER OF CYLINDERS.....6
- BORE X STROKE.....36 X 24.0 mm
- DISPLACEMENT.....146.7 cm³/REV
- SPEED RANGE.....700 - 6000 RPM
- ROTATION DIRECTION.....CW OR CCW
- REFRIGERANT.....R-134a
- LUBRICANT.....PAG 46 150+20cmm3
- WEIGHT.....4.6 Kg

UNLESS OTHERWISE SPECIFIED
DIMENSIONS ARE IN MM PER
INTERPRET DIM AND TOL PER
ASME Y14.5M - 1994

DOLE PRODUCTS, LLC

COMPRESSION ASSEMBLY

QP15HD V-3/4 7/8 MOND HEAD

A2 135mm 24V 3-EYE

THIRD ANGLE PROJECTION	CHECKED	GLB	DATE
	APPROVED		11/08/07

FINISH	ENG APPVL	SCALE NONE	SHEET 1 OF 1
--------	-----------	------------	--------------