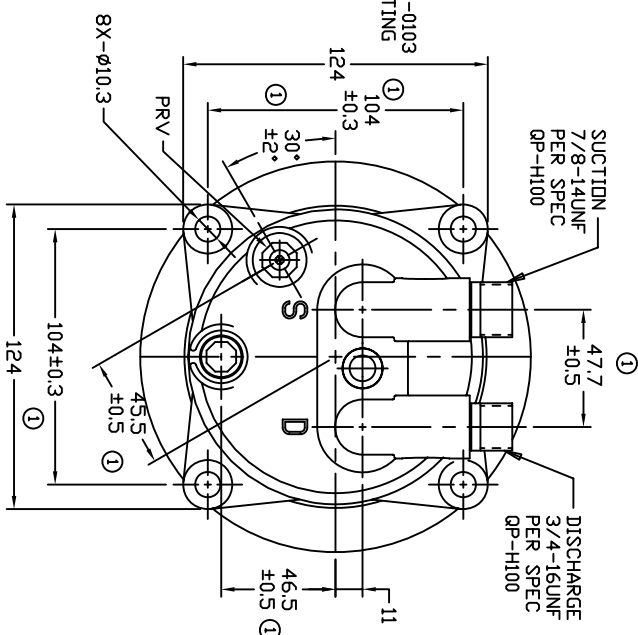
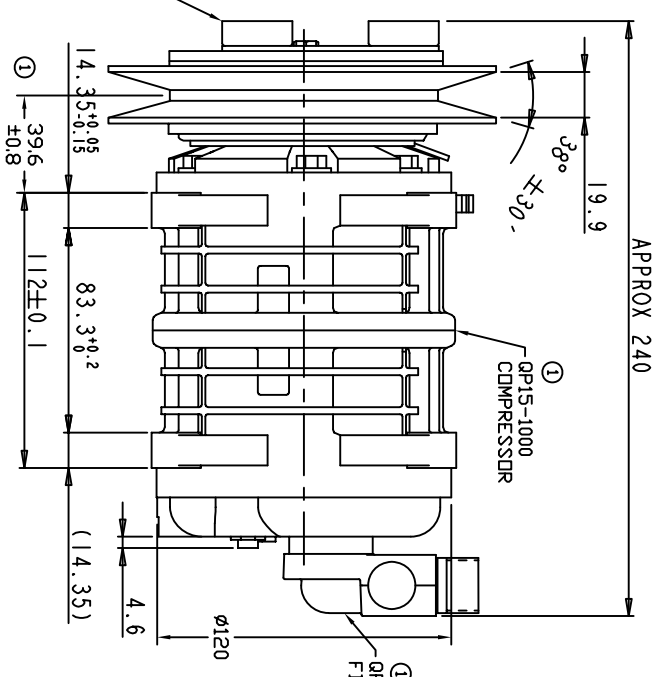
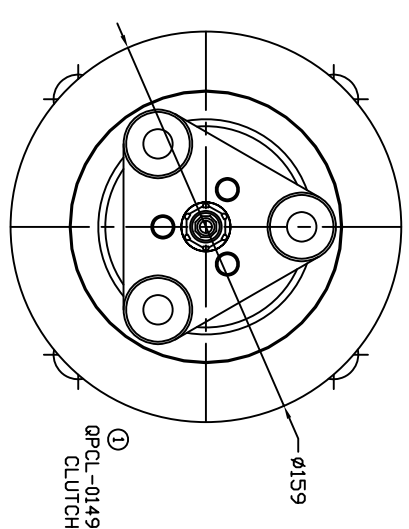


TERMINAL LEAD DETAIL

REVISIONS		DATE	APPROVED
CHANGE ORDER	LTR	DESCRIPTION	
009035	1	ADDED TOLERANCES & PART NOS	09/23/09



CLUTCH SPECIFICATIONS:

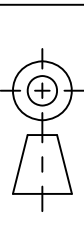
- VOLTAGE..... 24 VDC
- BELT..... A1 OR B1
- STATIC TORQUE
INITIAL..... 35 Nm (3.5 Kgfm)
AFTER BURNISHING..... 49 Nm (5 Kgfm)
- MAX POWER CONSUMPTION..... 45W @ 25°C
- ROTATION DIRECTION..... CW OR CCW
- WEIGHT..... 2.85 Kg

COMPRESSOR SPECIFICATIONS:

- MODEL..... QP15HD
- NUMBER OF CYLINDERS..... 6
- BORE X STROKE..... 36 X 24.0 mm
- DISPLACEMENT..... 146.7 cm³/REV
- SPEED RANGE..... 700 - 6000 RPM
- ROTATION DIRECTION..... CW OR CCW
- REFRIGERANT..... R-134a
- LUBRICANT..... PAG 46 150+20 cm³
- WEIGHT..... 4.4 Kg

UNLESS OTHERWISE SPECIFIED
 DIMENSIONS ARE IN MM. PER
 INTERPRET DIM AND TOL. PER
 ASME Y14.5M - 1994

THIRD ANGLE PROJECTION



FINISH	APPROVED	ENG APPVL

CAD GENERATED DRAWING;
 DO NOT MANUALLY UPDATE

DATE	DATE
06/27/08	

TITLE
 COMPRESSOR ASSEMBLY
 QP15HD V-3/4 7/8
 VARIABLE GROOVE 159mm 24V 3-EYE

SCALE NONE	SHEET 1 OF 1

