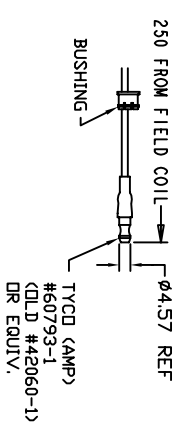
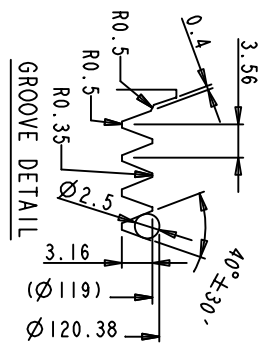
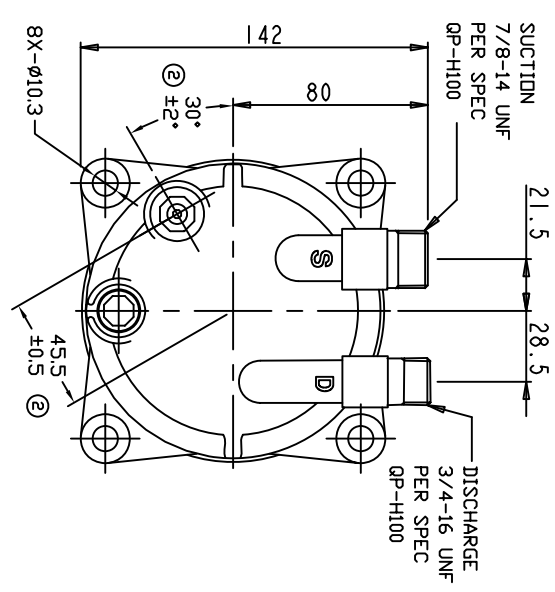
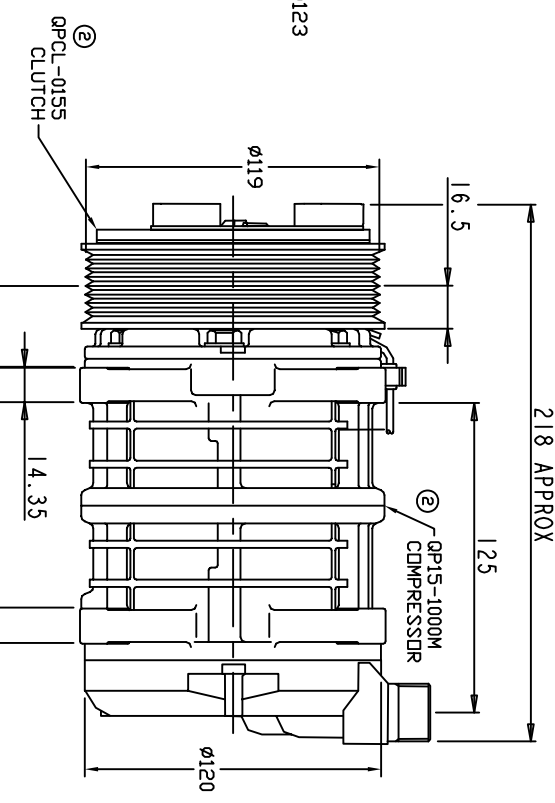
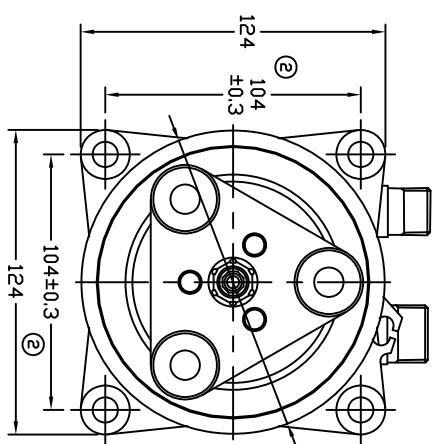


REVISIONS		DATE	APPROVED
CHANGE ORDER	LTR	DESCRIPTION	
ENG	1	PAG 46 was PAG 100 008023	10/01/08
009035	2	ADDED TOLERANCES & PART NOS	10/01/09



TERMINAL LEAD DETAIL



CLUTCH SPECIFICATIONS:

- VOLTAGE.....12 VDC
- BELT.....PV8
- STATIC TORQUE.....35 Nm (3.5 Kgfm)
- INITIAL AFTER BURINISHING.....49 Nm (5 Kgfm)
- MAX POWER CONSUMPTION.....45W @ 25°C
- ROTATION DIRECTION.....CW OR CCW
- WEIGHT.....2.3 Kg

QP-15HD

- SPEED RANGE.....700 - 6000 RPM
- ROTATION DIRECTION.....CW OR CCW
- REFRIGERANT.....R-134a
- LUBRICANT.....PAG 46 150+20cm3
- WEIGHT.....4.6 Kg

UNLESS OTHERWISE SPECIFIED  
 DIMENSIONS ARE IN MM PER  
 INTERPRET DIM AND TOL PER  
 ASME Y14.5M - 1994

**DOVE PRODUCTS, LLC**

CAD GENERATED DRAWING;  
 DO NOT MANUALLY UPDATE

TITLE  
 COMPRESSOR ASSEMBLY



SIZE  
 A

FINISH

SCALE NONE