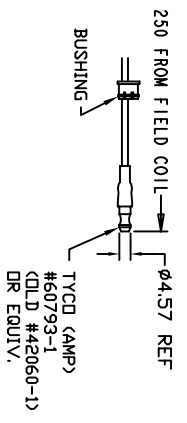
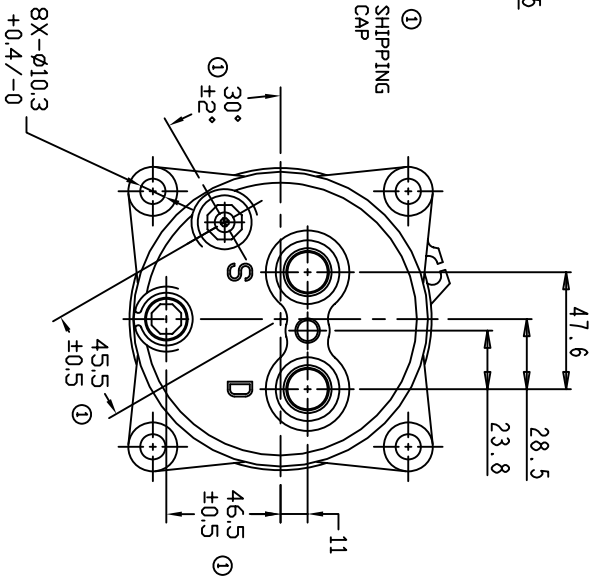
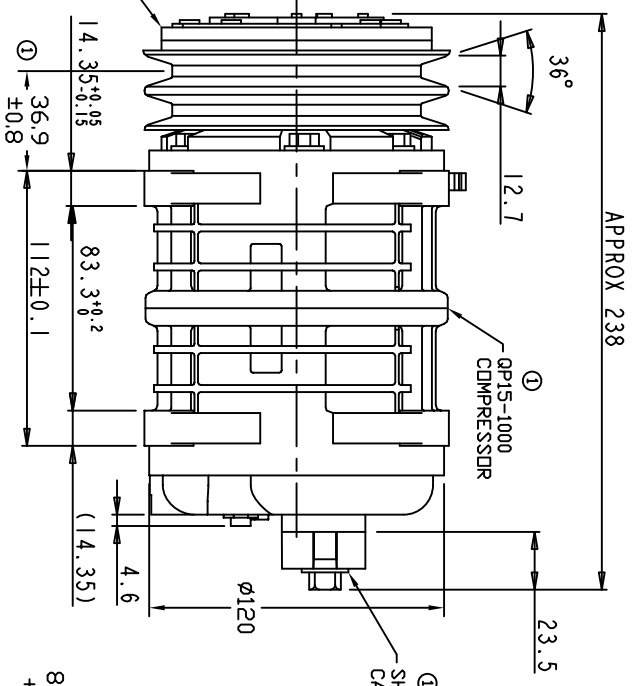
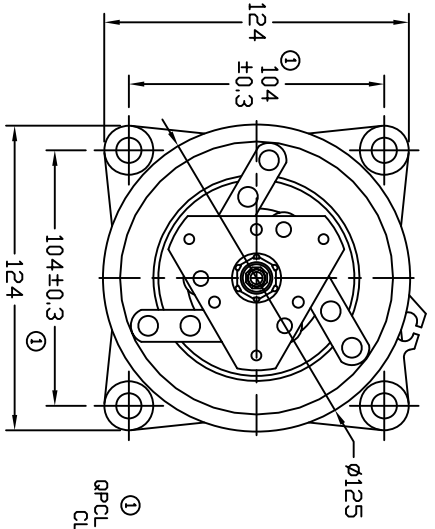


REVISIONS		DATE	APPROVED
CHANGE ORDER	LTR	DESCRIPTION	
009035	1	ADDED TOLERANCES & PART NDS	10/06/09



TERMINAL LEAD DETAIL



CLUTCH SPECIFICATIONS:

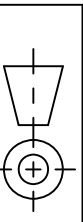
- VOLTAGE.....12 VDC
- BELT.....A2
- STATIC TORQUE.....
- INITIAL.....
- AFTER BURNISHING.....35 Nm (3.5 Kgfm)
- MAX POWER CONSUMPTION.....49 Nm (5 Kgfm)
- ROTATION DIRECTION.....45W Ø 25°C
- WEIGHT.....CW OR CCW
- WEIGHT.....2.30 Kg

COMPRESSOR SPECIFICATIONS:

- MODEL.....QP-15HD
- NUMBER OF CYLINDERS.....6
- BORE X STROKE.....36 X 24.0 mm
- DISPLACEMENT.....146.7 cm<sup>3</sup>/REV
- SPEED RANGE.....700 - 6000 RPM
- ROTATION DIRECTION.....CW OR CCW
- REFRIGERANT.....R-134a
- LUBRICANT.....PAG 46 150+20 cm<sup>3</sup>
- WEIGHT.....4.4 Kg

UNLESS OTHERWISE SPECIFIED  
DIMENSIONS ARE IN MM PER  
INTERPRET DIM AND TOL PER  
ASME Y14.5M - 1994

THIRD ANGLE PROJECTION



CAD GENERATED DRAWING, DO NOT MANUALLY UPDATE	DATE
GLB	08/25/08

CHECKED

APPROVED

ENG APPVL



TITLE  
COMPRESSOR ASSEMBLY

QP-15HD

A2 125MM 12V LEAF SPRING

SIZE A  
CODE IDENT NO DWG NO QP15-1176  
SCALE: NONE SHEET 1 OF 1