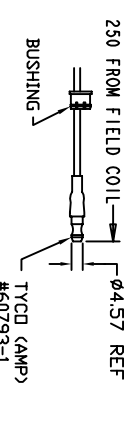
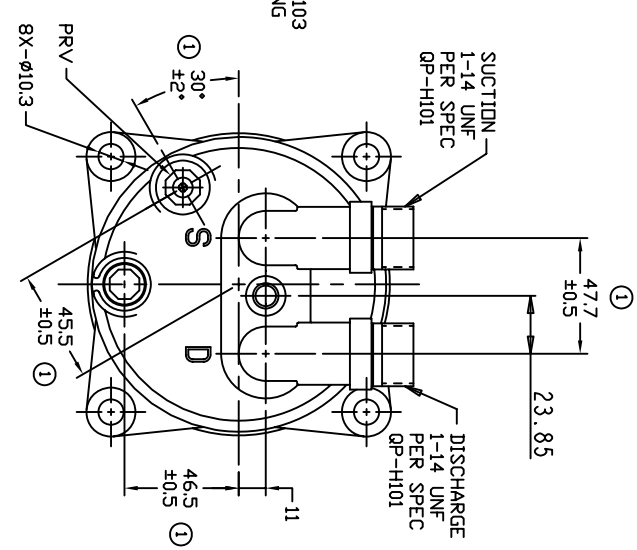
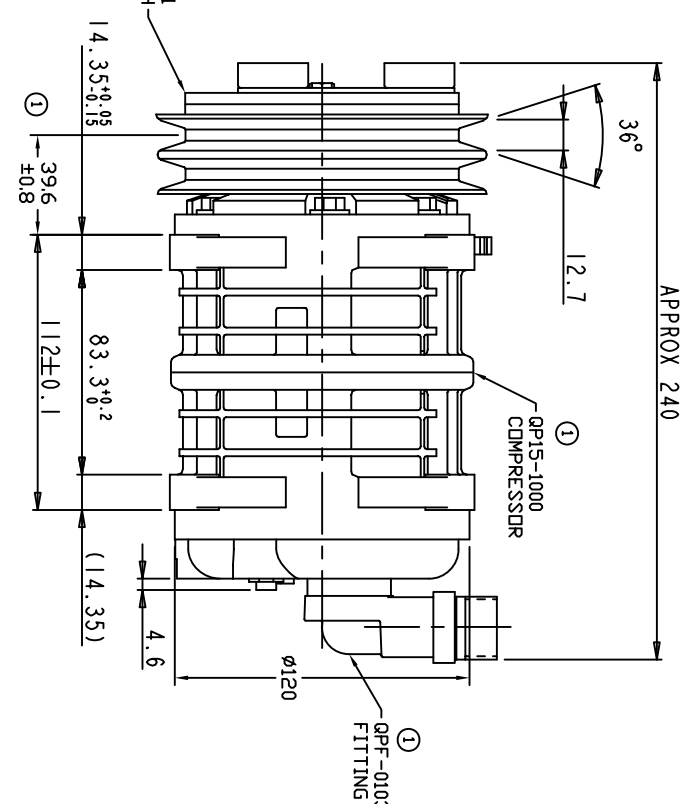
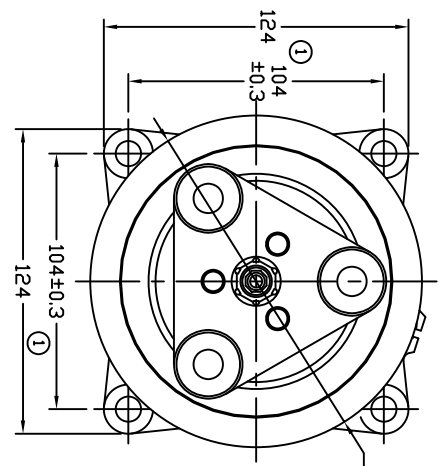


REVISIONS			DATE	APPROVED
CHANGE ORDER	LTR	DESCRIPTION		
009035	2	ADDED TOLERANCES & PART NRS	10/27/09	



TERMINAL LEAD DETAIL



**CLUTCH SPECIFICATIONS:**

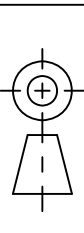
- VOLTAGE.....12 VDC
- BELT.....A2
- STATIC TORQUE.....  
 INITIAL.....  
 AFTER BURNISHING.....35 Nm (3.5 kgfm)
- MAX POWER CONSUMPTION.....49 Nm (5 kgfm)
- ROTATION DIRECTION.....45W @ 25°C  
 CW OR CCW
- WEIGHT.....2.25 Kg

**COMPRESSOR SPECIFICATIONS:**

- MODEL.....GP15HD
- NUMBER OF CYLINDERS.....6
- BORE X STROKE.....36 X 24.0 mm
- DISPLACEMENT.....146.7 cm<sup>3</sup>/REV
- SPEED RANGE.....700 - 6000 RPM
- ROTATION DIRECTION.....CW OR CCW
- REFRIGERANT.....R-134a
- LUBRICANT.....PAG 46 150+20 cm<sup>3</sup>
- WEIGHT.....4.4 Kg

UNLESS OTHERWISE SPECIFIED  
 DIMENSIONS ARE IN MM. PER  
 INTERPRET DIM AND TOL. PER  
 ASME Y14.5M - 1994

THIRD ANGLE PROJECTION



**DAVE PRODUCTS, LLC**

TITLE  
 COMPRESSOR ASSEMBLY  
 GP15HD V-1X14

SIZE  
 A2 135mm 12V 3-EYE

SCALE NONE  
 SHEET 1 OF 1