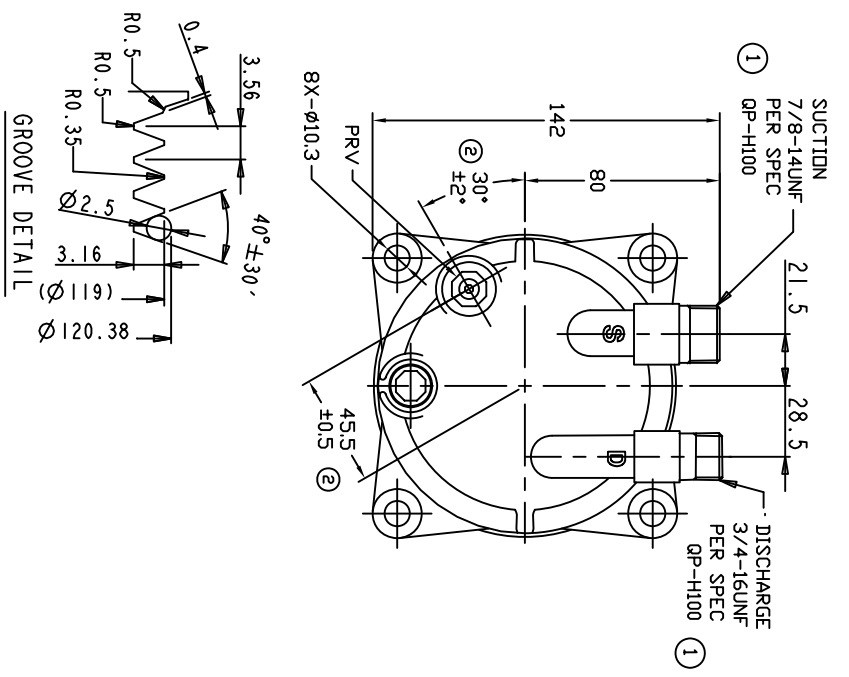
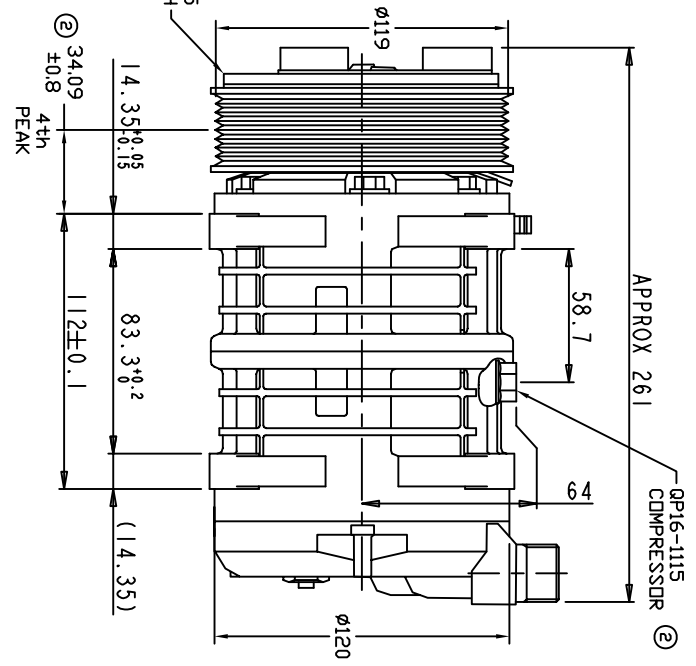
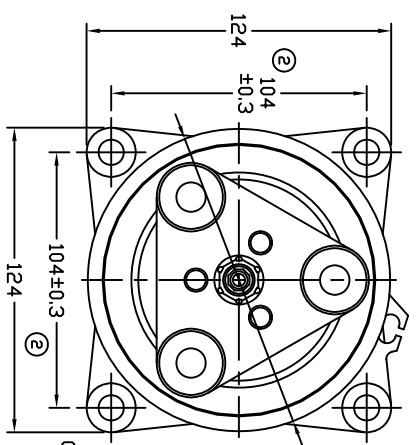


TERMINAL LEAD DETAIL

REVISIONS		DATE	APPROVED
CHANGE ORDER	LTR	DESCRIPTION	
008023	1	PAG 46 was PAG 100, ADDED QP-H100 SPEC	08/26/08
009035	2	ADDED TOLERANCES & PART NDS	10/14/09



CLUTCH SPECIFICATIONS:

- VOLTAGE..... 12 VDC
- BELT..... PV8
- STATIC TORQUE.....
- INITIAL AFTER BURNISHING..... 35 Nm (3.5 Kgfm)
- MAX POWER CONSUMPTION..... 49 Nm (5 Kgfm)
- ROTATION DIRECTION..... CW OR CCW
- WEIGHT..... 2.30 Kg

COMPRESSOR SPECIFICATIONS:

- MODEL..... QP16HD
- NUMBER OF CYLINDERS..... 6
- BORE X STROKE..... 36 X 26.7 mm
- DISPLACEMENT..... 162.9 cm³/REV
- SPEED RANGE..... 700 - 6000 RPM
- ROTATION DIRECTION..... CW OR CCW
- REFRIGERANT..... R-134a
- LUBRICANT..... PAG 46 180+20cns3
- WEIGHT..... 4.7 Kg

UNLESS OTHERWISE SPECIFIED
 DIMENSIONS ARE IN MM PER
 INTERPRET DIM AND TOL PER
 ASME Y14.5M - 1994



THIRD ANGLE PROJECTION		CAD GENERATED DRAWING; DO NOT MANUALLY UPDATE		TITLE	
FINISH		GLB	DATE	COMPRESSOR ASSEMBLY	
		CHECKED	11/08/07	QP16HD MONOLITHIC	
		APPROVED		PV8 119mm 12V 3-EYE	
		ENG APPVL		SCALE NONE	
				SIZE A	
				CODE IDENT NO DWG NO	
				QP16-1196	
				SHEET 1 OF 1	
				REV 2	