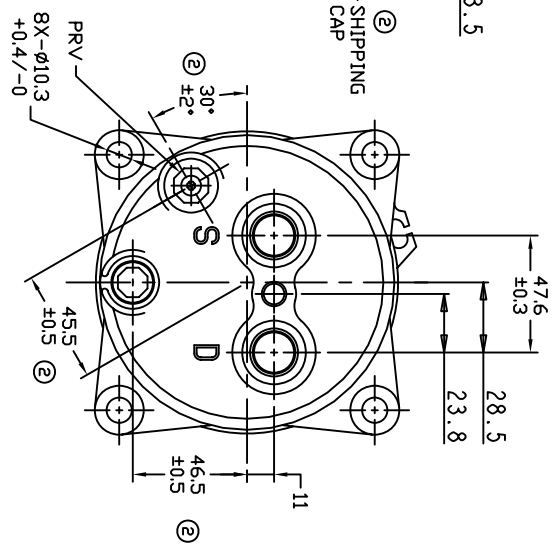
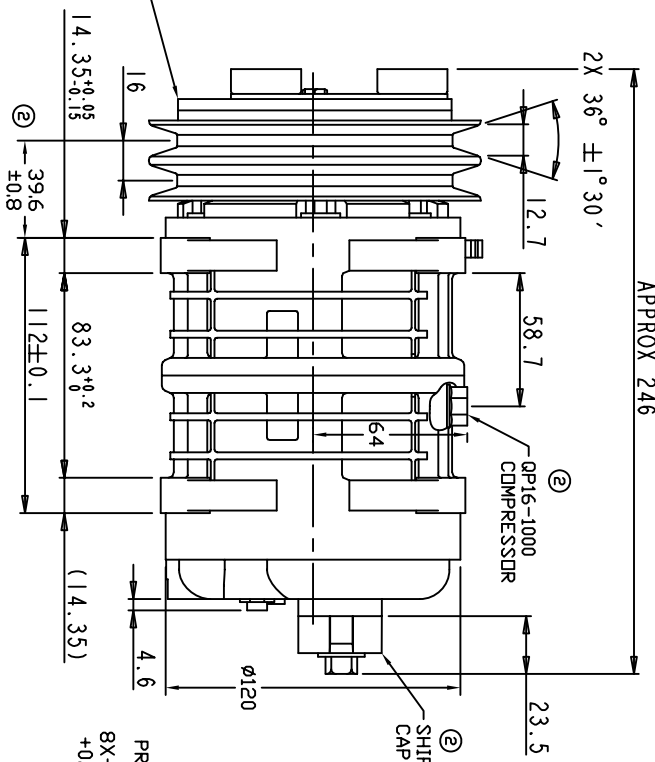
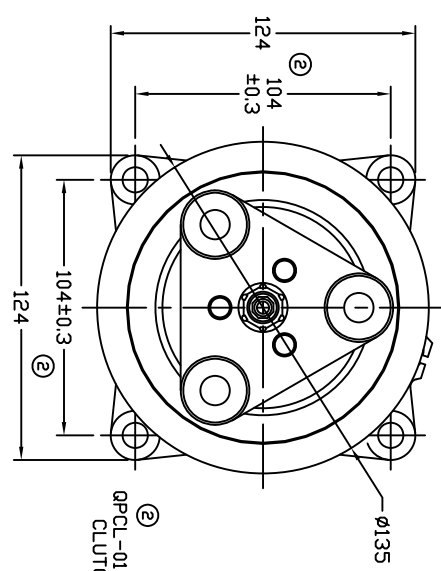


TERMINAL LEAD DETAIL

CHANGE ORDER		DESCRIPTION		DATE	APPROVED
008023	1	PAG 46 was PAG 100		08/26/08	
009035	2	ADDED TOLERANCES & PART NOS		11/02/09	



CLUTCH SPECIFICATIONS:

- VOLTAGE..... 24 VDC
- BELT..... A2
- STATIC TORQUE..... 2.25 Kg
- INITIAL..... 35 Nm (3.5 Kgfm)
- AFTER BURNISHING..... 49 Nm (5 Kgfm)
- MAX POWER CONSUMPTION..... 45W @ 25°C
- ROTATION DIRECTION..... CW OR CCW
- WEIGHT..... 2.25 Kg

COMPRESSOR SPECIFICATIONS:

- MODEL..... QP16HD
- NUMBER OF CYLINDERS..... 6
- BORE X STROKE..... 36 X 26.7 mm
- DISPLACEMENT..... 162.9 cm<sup>3</sup>/REV
- SPEED RANGE..... 700 - 6000 RPM
- ROTATION DIRECTION..... CW OR CCW
- REFRIGERANT..... R-134a
- LUBRICANT..... PAG 46 180+20cm<sup>3</sup>
- WEIGHT..... 4.7 Kg

UNLESS OTHERWISE SPECIFIED DIMENSIONS ARE IN MM PER INTERPRET DIM AND TOL PER ASME Y14.5M - 1994



CAD GENERATED DRAWING; DO NOT MANUALLY UPDATE

TITLE: COMPRESSOR ASSEMBLY  
QP16HD H-PAD

THIRD ANGLE PROJECTION	CHECKED	DATE
	APPROVED	11/08/07

FINISH	APPROVED	DATE
	ENG APPVL	11/08/07

THIRD ANGLE PROJECTION	CHECKED	DATE
	APPROVED	11/08/07

FINISH	APPROVED	DATE
	ENG APPVL	11/08/07

SIZE	CODE IDENT NO	DWG NO	REV
A		QP16-1199	2

SCALE: NONE SHEET 1 OF 1