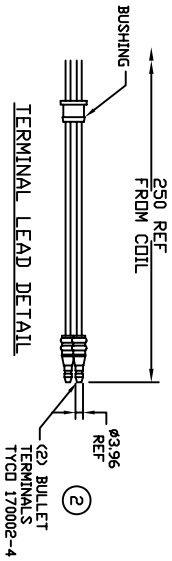
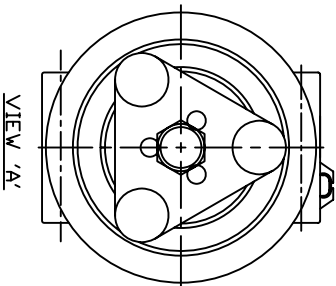
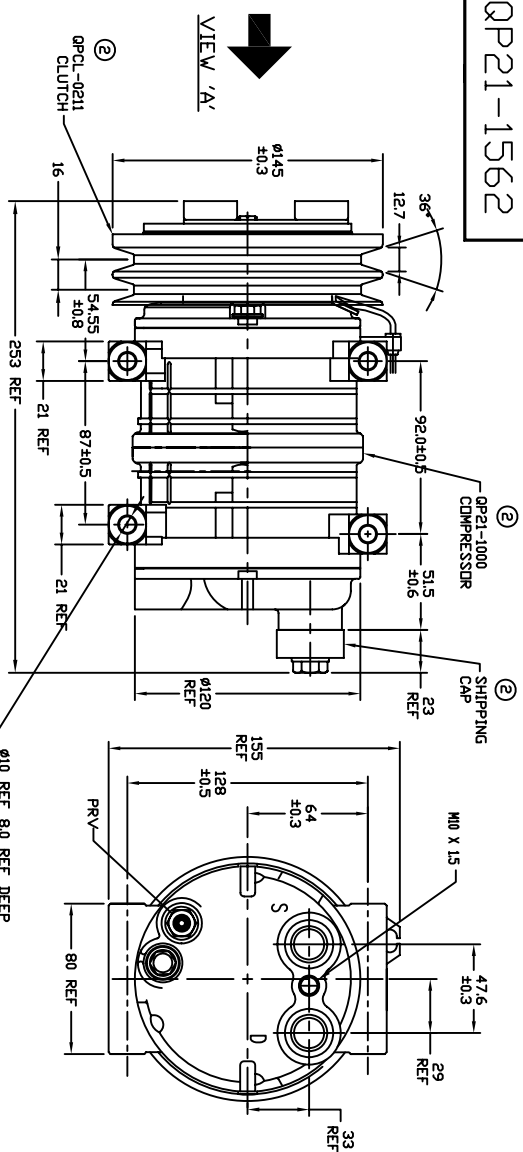


QP21-1562



**CLUTCH SPECIFICATIONS**

- 1) VOLTAGE.....12 VDC
- 2) BELT.....A2
- 3) STATIC TORQUE
- INITIAL.....40 Nm
- AFTER BURNISHING.....59 Nm
- 4) MAX POWER CONSUMPTION.....45W @ 25°C
- 5) WEIGHT.....31 Kg

**COMPRESSOR SPECIFICATIONS**

- 1) MODEL.....QP21
- 2) NUMBER OF CYLINDERS.....10
- 3) BORE x STROKE.....ø32 x 26.7
- 4) DISPLACEMENT.....214.7 cm3
- 5) SPEED RANGE.....700-6000 RPM
- 6) ROTATION DIRECTION.....CW or CCW
- 7) REFERIGERANT.....R-134a
- 8) LUBRICANT.....PAG 46 180 +20c
- 9) WEIGHT.....5.1 Kg

**REVISIONS**

CHG	ED#	DESCRIPTION	DATE	BY	CK
2	008023	REDRAWN, ADDED TOLERANCES & PART NDS	11/17/09	GLB	

**NOTICE**  
 QUE PRODUCTS, LLC CLAIMS PROPRIETARY RIGHTS IN THE MATERIAL DISCLOSED HEREIN. THIS DRAWING IS ISSUED FOR ENGINEERING INFORMATION ONLY. IT MAY NOT BE REPRODUCED, NOR MAY THE INFORMATION HEREON BE USED FOR MFG. PURPOSES WITHOUT WRITTEN PERMISSION FROM QUE PRODUCTS, LLC

**UNLESS OTHERWISE SPECIFIED:**  
 X.XX=± - X.XXX=± - <=± -  
 DRAFT = - PER SIDE WALL = - RADI = -  
 DIMENSION LIMITS TO BE HELD AFTER PLAYING OR  
 CONVERSION COATING  
 DIMENSIONS PER ANSI Y14.5  
 SURFACE FINISH PER ANSI Y14.36  
 CUSTOMER NAME PART ND - REV



**ALL CHANGES TO BE MADE ON CAD SYSTEM**

DRAWN	DATE	EWB-ECR	CHECKED	DATE
GLB	05/08/2007			

MATERIAL AND HEAT TREAT - FINISH -

TITLE  
 H-PAD A2 145mm 12V

FILE SIZE  
 EXPERIMENTAL DWG NO  
 RELEASED DWG NO  
 QP21-1564

SCALE / = 1.00 DO NOT SCALE DRAWING SHEET 1 OF 1