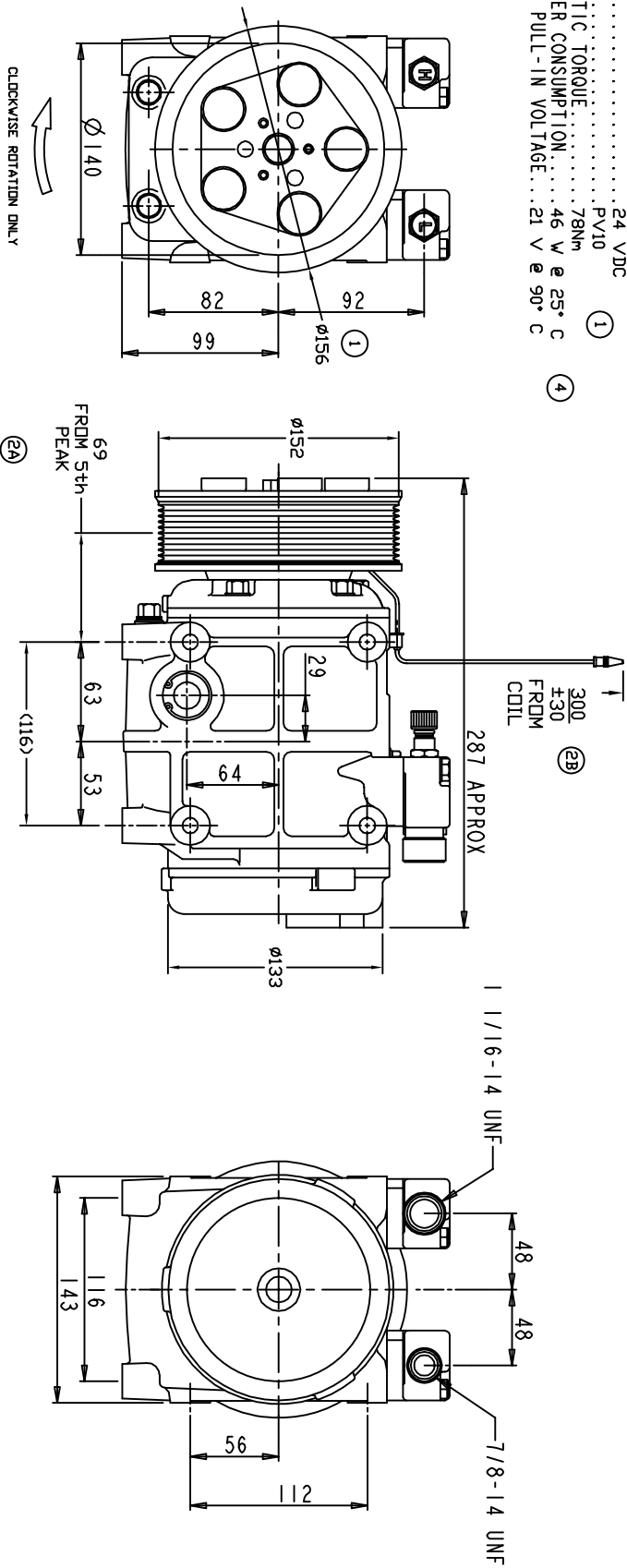


COMPRESSOR SPECIFICATIONS:

1. MODEL.....QP31
2. NUMBER OF CYLINDERS.....10
3. BORE X STROKE.....36 X 30.7 mm
4. DISPLACEMENT.....313 cm<sup>3</sup>/rev
5. SPEED RANGE.....700 - 5000 RPM
6. ROTATION DIRECTION.....CLOCKWISE
7. REFRIGERANT.....R-134a
8. LUBRICANT.....PAG 46 500+30 cm<sup>3</sup>
9. MASS.....10.7 kg

CLUTCH SPECIFICATIONS:

1. VOLTAGE.....24 VDC
2. BELT.....PV10
3. MIN STATIC TORQUE.....78Nm
4. MAX POWER CONSUMPTION.....46 W @ 25° C
5. MINIMUM PULL-IN VOLTAGE.....21 V @ 90° C



CHANGE ORDER		REVISIONS		
ORDER	LTR	DESCRIPTION	DATE	APPROVED
1	ENG	PV10 WAS 10K, 15K, WAS 1524	10/09/07	
2A	ENG	69 fm 5th WAS 66.5 fm 4th grv	10/26/07	
2B	ENG	ADDED BALLT CONNECTOR	10/26/07	
3	ENG	ILL. PAG 46 WAS ZXL 1089G	09/23/08	
4	ENG	ADDED CLUTCH SPECS	07/07/09	

UNLESS OTHERWISE SPECIFIED  
DIMENSIONS ARE IN MM. PER  
INTERPRET DIM AND TOL. PER  
ASME Y14.5M - 1994

CAD GENERATED DRAWING;  
DO NOT MANUALLY UPDATE

TITLE	DATE	DATE	DATE
COMPRESSION ASSEMBLY	05/08/07		
QP31			
PV10 152MM 24V 5-EYE			
QP31-1703			

SCALE: NONE

SHEET 1 OF 1

REV 4

QOLUE PRODUCTS, LLC

FINISH

APPROVED

ENG APPVL

CHECKED

GLB

DATE

05/08/07

THIRD ANGLE PROJECTION

DRAWN

GLB

DATE

05/08/07

DO NOT MANUALLY UPDATE

CAD GENERATED DRAWING;

UNLESS OTHERWISE SPECIFIED

DIMENSIONS ARE IN MM. PER

INTERPRET DIM AND TOL. PER

ASME Y14.5M - 1994

11/16-14 UNF

7/8-14 UNF

116

143

56

112

48

48

287 APPROX

300

±30

FROM

COIL

229

64

63

53

69

FROM 5th

PEAK

2A

116

143

56

112

48

48

287 APPROX

300

±30

FROM

COIL

229

64

63

53

69

FROM 5th

PEAK

2A

116

143

56

112

48

48

287 APPROX

300

±30

FROM

COIL

229

64

63

53

69

FROM 5th

PEAK

2A

116

143

56

112

48

48

287 APPROX

300

±30

FROM

COIL

229

64

63

53

69

FROM 5th

PEAK

2A

116

143

56

112

48

48

287 APPROX

300

±30

FROM

COIL

229

64

63

53

69

FROM 5th

PEAK

2A

116

143

56

112

48

48

287 APPROX

300

±30

FROM

COIL

229

64

63

53

69

FROM 5th

PEAK

2A

116

143

56

112

48

48

287 APPROX

300

±30

FROM

COIL

229

64

63

53

69

FROM 5th

PEAK

2A

116

143

56

112

48

48

287 APPROX

300

±30

FROM

COIL

229

64

63

53

69

FROM 5th

PEAK

2A

116

143

56

112

48

48

287 APPROX

300

±30

FROM

COIL

229

64

63

53

69

FROM 5th

PEAK

2A

116

143

56

112

48

48

287 APPROX

300

±30

FROM

COIL

229

64

63

53

69

FROM 5th

PEAK

2A

116

143

56

112

48

48

287 APPROX

300

±30

FROM

COIL

229

64

63

53

69

FROM 5th

PEAK

2A

116

143

56

112

48

48

287 APPROX

300

±30

FROM

COIL

229

64

63

53

69

FROM 5th

PEAK

2A

116

143

56

112

48

48

287 APPROX

300

±30

FROM